



UNICUS
OLYMPIADS

#UnicusIsUnique

Sample Paper



Class 4

Unicus General Knowledge Olympiad (UGKO)

Time: 60 minutes

| Pattern and Marking Scheme | | | |
|----------------------------|-----------------|--------------------|-------------|
| Section | Total Questions | Marks per Question | Total Marks |
| Classic Section | 30 | 1 | 30 |
| Scholar Section | 10 | 2 | 20 |
| Grand Total | 40 | | 50 |

Classic Section (Each Question is of 1 Mark)

1. Which insect creates a paper-like home by chewing on wood and mixing it with saliva?

- | | |
|------------|---------|
| a. Ant | b. Bee |
| c. Termite | d. Wasp |
-

2. Jazz music originated in which country?

- | | |
|-----------|------------|
| a. Brazil | b. Jamaica |
| c. France | d. USA |
-

3. Why do rainbows have so many colours?

- | | |
|--------------------------------|----------------------------------|
| a. The sun shines through rain | b. Clouds paint the sky |
| c. The air scatters colours | d. Birds splash paint in the sky |
-

4. Fill in the blank:

Lily was in Egypt and saw the pyramids. She thought, "These are like giant _____!"

- | | |
|-------------------------|--------------------|
| a. ice cream cones | b. triangular hats |
| c. giant birthday cakes | d. sandcastles |
-

5. What is the floating village in Cambodia called?

- | | |
|--------------------------|-----------------------|
| a. Kompong Phluk Village | b. Angkor Wat Village |
| c. Tonle Sap Village | d. Siem Reap Village |
-

6. This famous bridge in Venice, Italy, connects the two parts of the city and has a unique design. What is it called?

- | | |
|--------------------|-----------------------|
| a. Tower Bridge | b. Golden Gate Bridge |
| c. Brooklyn Bridge | d. Rialto Bridge |
-

7. Polly the parrot needed a tool to open a nut. What will Polly most likely use to open it?

- | | |
|--------------------|--------------------|
| a. A sharp stick | b. A heavy stone |
| c. Its strong beak | d. A nearby monkey |
-

8. Which activity is encouraged on World Environment Day?

- | | |
|---------------------|--------------------|
| a. Cleaning beaches | b. Painting murals |
| c. Building parks | d. Planting trees |
-

9. What makes a rainbow to have seven colours?

- | | |
|---------------------------------|--|
| a. The sun paints the sky | b. Birds spread color with their wings |
| c. The wind carries the colours | d. Raindrops split sunlight into colours |
-

Unicus General Knowledge Olympiad (UGKO)

10. Which is the largest waterfall in the world?



- | | |
|--------------------|-------------------|
| a. Nohur Waterfall | b. Victoria Falls |
| c. Yosemite Falls | d. Angel Falls |
-

11. What does it mean if birds suddenly stop chirping?

- | | |
|----------------------|----------------------|
| a. They are sleeping | b. A storm is coming |
| c. They are hungry | d. They are playing |
-

12. What is the most dangerous thing about floodwater?

- | | |
|--------------------|---------------------------------|
| a. It is deep | b. It smells bad |
| c. It tastes salty | d. It can hide dangerous debris |
-

13. Where are dragon boat races most commonly held?

- | | |
|-----------|------------------|
| a. Africa | b. Europe |
| c. Asia | d. South America |
-

14. Which traditional footwear is famous in Japan?

- | | |
|--------------|----------------|
| a. Moccasins | b. Clogs |
| c. Geta | d. Espadrilles |
-

15. Which star is the brightest in the night sky?

- | | |
|------------|---------------|
| a. Sirius | b. Vega |
| c. Polaris | d. Betelgeuse |
-

16. What is the main purpose of a passport?

- | | |
|---------------------|----------------------------|
| a. To book flights | b. To identify nationality |
| c. To carry luggage | d. To buy tickets |
-

Unicus General Knowledge Olympiad (UGKO)

17. Which animal is known for its incredible speed, capable of reaching speeds of up to 75 miles per hour?

- a. 
 - b. 
 - c. 
 - d. 
-

18. Which vehicle is used to travel underwater and is often used for scientific research?

- a. 
 - b. 
 - c. 
 - d. 
-

19. What kind of vehicle uses electricity stored in batteries to move?

- a. Electric car
 - b. Gasoline car
 - c. Solar car
 - d. Submarine
-

20. Why is April 7 celebrated as World Health Day?

- a. To spread awareness about global health.
 - b. To celebrate only doctors and hospitals.
 - c. To protest against government
 - d. To increase payscale of healthworkers
-

21. How do woodpeckers avoid hurting their brains when pecking?

- a. They have special shock-absorbing skulls
 - b. They peck very slowly
 - c. They wear invisible helmets
 - d. They only peck soft trees
-

22. How can dogs detect smells that humans cannot?

- a. They have more nose hairs.
 - b. They have 40 times more scent receptors.
 - c. They smell with their ears.
 - d. They smell with their paws.
-

Unicus General Knowledge Olympiad (UGKO)

23. Which musical instrument has keys but does not need electricity?

- | | |
|----------------------|----------------|
| a. Electric keyboard | b. Grand piano |
| c. Synthesizer | d. Drum set |
-

24. In volleyball, how many players are on each team on the court?

- | | |
|------|------|
| a. 6 | b. 5 |
| c. 7 | d. 8 |
-

25. Which is the main goal of World Animal Day?

- | | |
|--------------------------------------|-------------------------------|
| a. Protecting and respecting animals | b. Hunting rare species |
| c. Keeping animals as pets | d. Selling animals for profit |
-

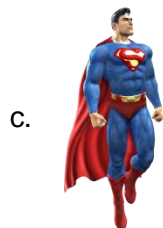
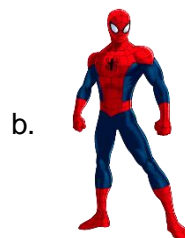
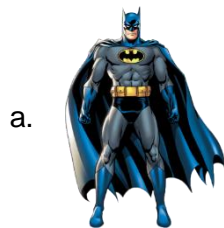
26. What is the primary objective in the game of handball?

- | | |
|-------------------------------|-------------------------------|
| a. Dribble the ball | b. Score in the opposing goal |
| c. Pass the ball to teammates | d. Avoid fouls |
-

27. How many floors does the Burj Khalifa have?

- | | |
|--------|--------|
| a. 132 | b. 154 |
| c. 163 | d. 148 |
-

28. Sarah is watching a movie about a superhero who can climb walls and shoot webs. Which superhero is she watching?



29. What is unique about the Palm Islands in Dubai compared to other islands?



- | | |
|-------------------------------|-----------------------------|
| a. They are volcanic islands. | b. They float on the water. |
| c. They are man-made islands. | d. They are uninhabited. |
-

30. Why does the Leaning Tower of Pisa lean?

- | | |
|---------------------------|---------------------------|
| a. Earthquakes shifted it | b. Built on unstable soil |
| c. Poor original design | d. Intentional design |
-

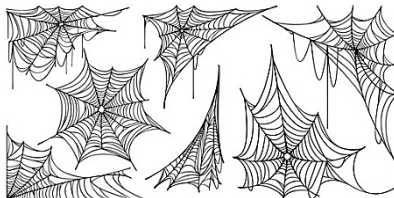
Scholar Section (Each Question is of 2 Marks)

31. What is the eco-friendly floating house in Sweden called?

- | | |
|----------------------------|-------------------|
| a. The Ark House | b. EcoFloat House |
| c. Floating Home of Sweden | d. The Sea Breeze |
-

32. Arrange the stages of a spider's web-making process:

- A. Spider spins the outer frame
- B. Spider builds sticky threads
- C. Spider chooses a location



- | | |
|----------|----------|
| a. C-B-A | b. B-A-C |
| c. A-C-B | d. C-A-B |
-

33. Fill in the blank:

The _____ can regrow its entire body from just one piece of itself.

- | | |
|--------------|-------------|
| a. flatworm | b. starfish |
| c. jellyfish | d. lizard |
-

34. Which bird is the largest sea bird in the world?

- | | |
|--------------|------------|
| a. Penguin | b. Pelican |
| c. Albatross | d. Seagull |
-

Unicus General Knowledge Olympiad (UGKO)

35. Why do we celebrate International Children's Day?

- a. To highlight children's rights and welfare.
 - b. To promote education and safety
 - c. To make children work harder.
 - d. To teach children about money.
-

36. What does the Olympic torch symbolise?

- a. Unity and friendship
 - b. Peace and light
 - c. Victory and glory
 - d. Strength and energy
-

37. Fill in the blank:

The _____ in Cape Town is famous for its flat-topped mountain which overlooks the city and provides stunning views.

- a. Table mountain
 - b. Lion's head
 - c. Devil's peak
 - d. Signal hill
-

38. Vasco da Gama reached India by sailing around the Cape of Good Hope. Where is this located?

- a. South America
 - b. Australia
 - c. Africa
 - d. Europe
-

39. Which is the largest ocean on Earth?

- a. Atlantic Ocean
 - b. Pacific Ocean
 - c. Indian Ocean
 - d. Arctic Ocean
-

40. In which type of play do actors suddenly perform in public places?

- a. Tragedy
 - b. Flash Mob Theatre
 - c. Shadow Puppetry
 - d. Comedy
-

Answer Key

| | | | | | | | | | | | | | |
|-----|---|-----|---|-----|---|-----|---|-----|---|-----|---|-----|---|
| 1. | d | 2. | d | 3. | a | 4. | d | 5. | c | 6. | d | 7. | c |
| 8. | d | 9. | d | 10. | d | 11. | b | 12. | d | 13. | c | 14. | c |
| 15. | a | 16. | b | 17. | c | 18. | a | 19. | a | 20. | a | 21. | a |
| 22. | b | 23. | b | 24. | a | 25. | a | 26. | b | 27. | c | 28. | b |
| 29. | c | 30. | b | 31. | b | 32. | d | 33. | a | 34. | c | 35. | a |
| 36. | a | 37. | a | 38. | c | 39. | b | 40. | b | | | | |